

KEN BRACKER
ARCHITECT

311 ALEXANDER STREET, SUITE 214, ROCHESTER, NY 14604
TEL (585) 269-9557 EMAIL: KENBRACKER@AOL.COM

PROJECT: GENESSEE VALLEY SHOPPING CENTER
GENESECO, NY

CLIENT: FLAUM MANAGEMENT COMPANY INC.
400 ANDREWS STREET, SUITE 500
ROCHESTER, NEW YORK

DRAWING: SPACE 3, BUILDING B
LEASING PLAN

PROJECT NO: 27089

SCALE: AS NOTED

DATE: 10.11.2017

DRAWING BY: DM

CHECKED BY: KB

REVISIONS

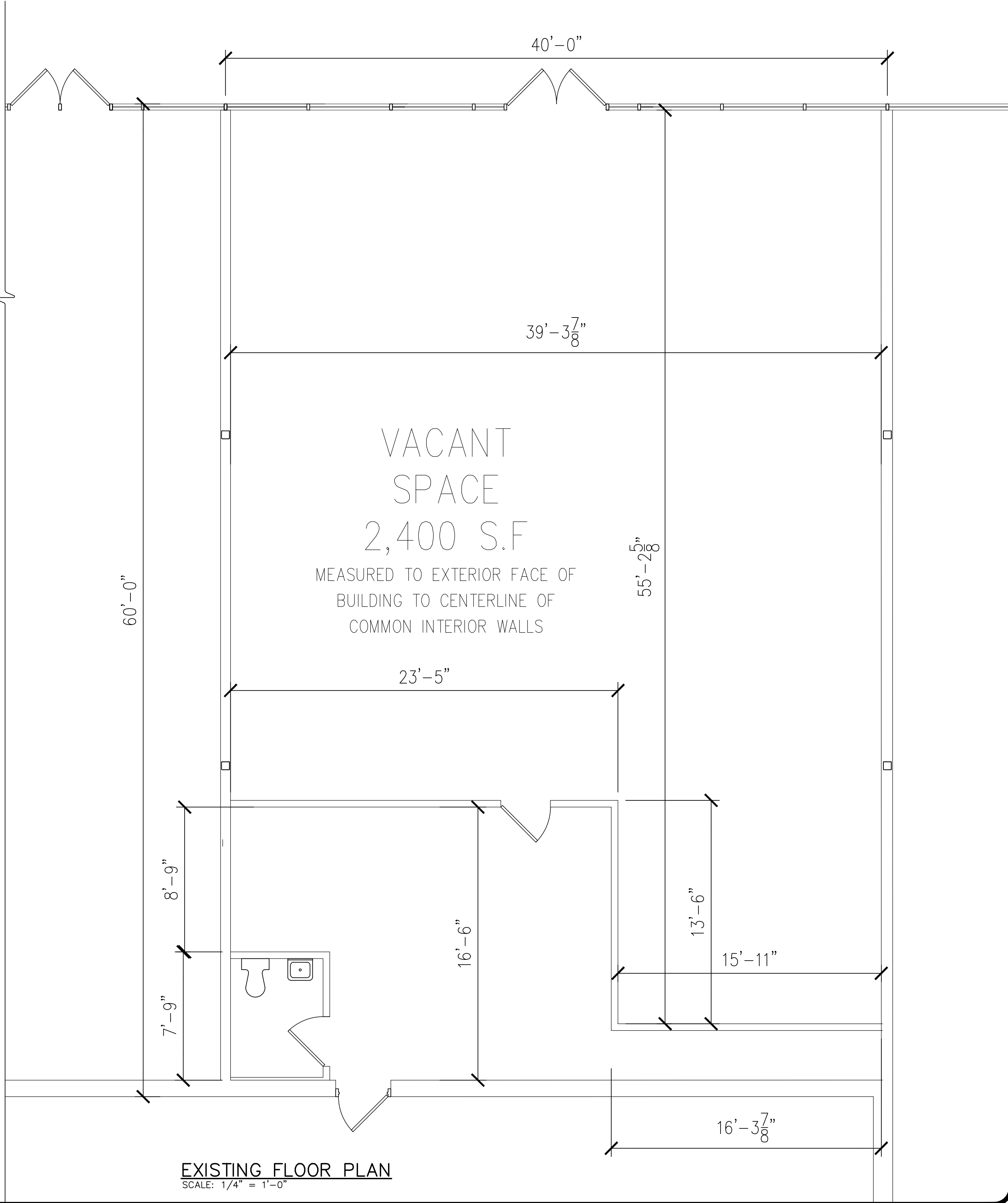
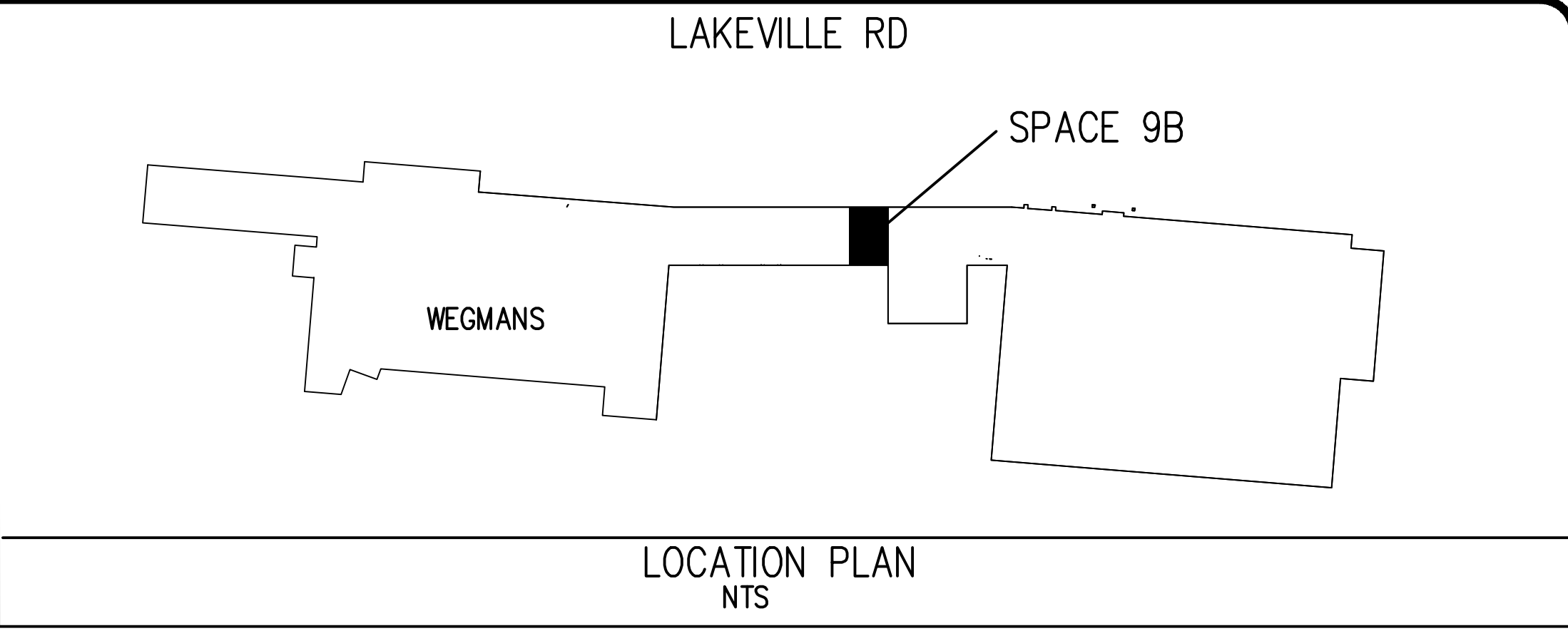
NO.	DATE	DESCRIPTION

DRAWING NO.
L-3-B

These drawings are the property of the architect. Ken Bracker & Assoc. Incorporated. No part of these drawings may be reproduced or transmitted in any form or by any means, electronic, mechanical, photocopying, recording, or by any information storage and retrieval system, without the prior written permission of the architect.

Contractor shall verify and be responsible for all dimensions and conditions on the job and the office must be notified of any variation from the dimensions and conditions shown by these drawings.

Unauthorized alterations or additions to this drawing is in violation of state regulations for articles 165 section 720b and article 167 section 720b.



KEN BRACKER
ARCHITECT

311 ALEXANDER STREET, SUITE 214, ROCHESTER, NY 14604
TEL (585) 269-9557 EMAIL: KENBRACKER@AOL.COM

PROJECT: GENESSEE VALLEY SHOPPING CENTER
GENESECO, NY

CLIENT: FLAUM MANAGEMENT COMPANY INC.
400 ANDREWS STREET, SUITE 500
ROCHESTER, NEW YORK

DRAWING: SPACE 9, BUILDING B
LEASING PLAN

PROJECT NO: 27089

SCALE: AS NOTED

DATE: 10.11.2017

DRAWING BY: DM

CHECKED BY: KB

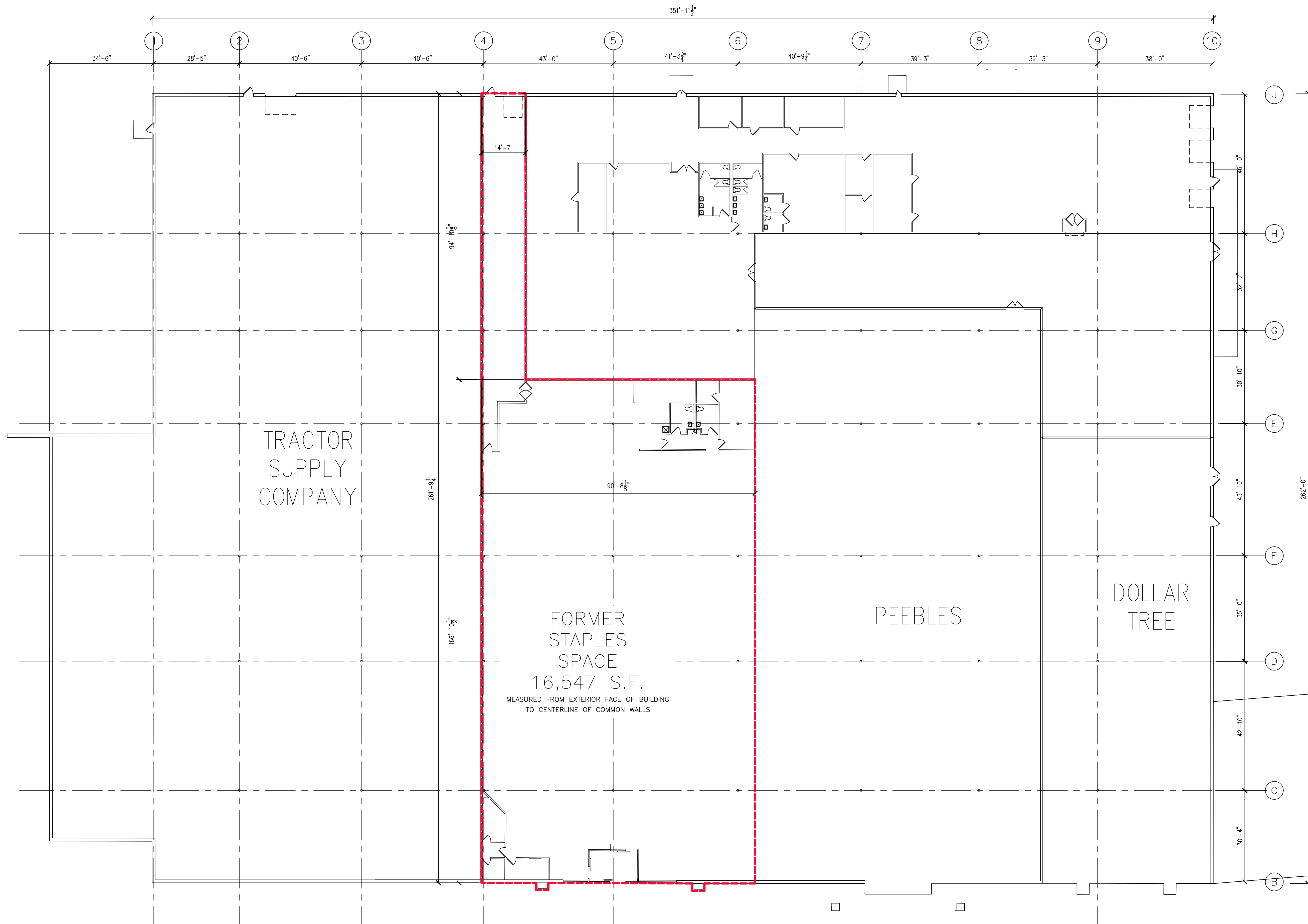
REVISIONS		
NO.	DATE	DESCRIPTION

DRAWING NO.
L-9-B

These drawings are the property of the architect. Ken Bracker & Assoc. Incorporated. No part of these drawings may be reproduced or transmitted in any form or by any means, electronic, mechanical, photocopying, recording, or by any information storage and retrieval system, without the prior written permission of the architect.

Contractor shall verify and be responsible for all dimensions and conditions on the job and the office must be notified of any variation from the dimensions and conditions shown by these drawings.

Unauthorized alterations or additions to this drawing is in violation of state regulations for articles 145 section 720b and article 147 section 720b.



EXISTING FLOOR PLAN
SCALE: 1/16" = 1'-0"

PROJECT: **GENESSEE VALLEY SHOPPING CENTER**
GENESECO, NY

CLIENT: **FLAJUM MANAGEMENT COMPANY INC.**
400 ANDREWS STREET, SUITE 500
ROCHESTER, NEW YORK

DRAWING: **LEASING PLAN**

PROJECT NO: 27089
SCALE: AS NOTED
DATE: 10.11.2017

DRAWING BY: DM
CHECKED BY: KB

REVISIONS

NO.	DATE	DESCRIPTION

DRAWING NO.
L-1

These drawings are the property of the architect, Ken Bracker & Associates, Inc. and shall remain the property of the architect. No part of these drawings shall be reproduced or transmitted in any form or by any means, electronic, mechanical, photocopying, recording, or by any information storage and retrieval system, without the prior written permission of the architect.

Contractor shall verify and be responsible for all dimensions and conditions on the job and this office must be notified of any variation from the dimensions and conditions shown on these drawings.

Unauthorized alteration or addition to this drawing is a violation of state applicable law unless it is made in accordance with section 1707 and section 1717 of the E.O. 12812.